



PROJECT		REF		REV	ITEM CODE	
LOCATION		DATE			PAGE	

SANITARY WARE SPECIFICATION SHEET

<p>Item Descriptions</p> <p>Dimensions</p> <p>Model</p> <p>Code Number</p> <p>Finish</p> <p>Supplier</p> <p>Contact Tel/Fax</p> <p>E-mail</p> <p>Website</p>	<p>Stern (Israel) "Touch Free" Chrome plated deck mounted sensor faucet in AC Supply with 5m wire AC 110-240 Vac 50/60Hz to 9V 0.3A IP68 waterproof switching transformers</p> <p>L99 x W38 x H135 mm</p> <p>Touch Free E AB 1953</p> <p>225710</p> <p>Chrome Plated</p> <p>Acme Sanitary Ware Co. Ltd Mr. Eric Wong/ Mr. Don Yuen</p> <p>(852) 2388-7171 / (852) 2710-8012 acme@acmesanitary.com.hk www.acmesanitary.com.hk</p>	<p style="text-align: center;">Illustration/ Drawing</p> <div style="text-align: center;">  </div> <div style="text-align: center;">  </div> <div style="text-align: center;">  </div> <p style="text-align: center;">(UK plug or wire fuse)</p>		
<p>Touch Free AB 1953 Touchless Deck Faucet Ref. 225710</p> <p>Touch-free electronic faucet for deck-mounted installations. Activated by a infrared sensor. For cold or premixed water. Filters included. Includes a low battery indicator. Latching solenoid valve is located above deck inside the product for added vandal protection. Solid brass one-piece construction. Adjustable settings by remote control: sensor range, security time, delay in, delay out, on-off and reset to factory settings.</p> <p>Application</p> <p>Deck-mounted commercial tap. Combining an elegant minimalist design with anti-vandal features. Easy installation. Long lasting even in the harshest installation sites. Helps washrooms stay clean and saves water. Prevents cross contamination. Ideal for stadiums, train and bus stations and highway rest stops.</p> <p>Use</p> <p>Touch-free electronic faucet. The touchless faucet is automatically activated when users place their hands in the sensor range and stops when the users remove their hands.</p>				
<table style="width: 100%; border: none;"> <tr> <td style="width: 50%; border: none;"> <p> Installation: Lavatory mounted</p> <p> Water supply: Cold or premixed water (1 inlet)</p> <p> Water temperature: Max 70 °C</p> </td> <td style="width: 50%; border: none;"> <p> Operating pressure: 0.5 - 8.0 bar</p> <p> Power source: 9V Transformer</p> </td> </tr> </table>			<p> Installation: Lavatory mounted</p> <p> Water supply: Cold or premixed water (1 inlet)</p> <p> Water temperature: Max 70 °C</p>	<p> Operating pressure: 0.5 - 8.0 bar</p> <p> Power source: 9V Transformer</p>
<p> Installation: Lavatory mounted</p> <p> Water supply: Cold or premixed water (1 inlet)</p> <p> Water temperature: Max 70 °C</p>	<p> Operating pressure: 0.5 - 8.0 bar</p> <p> Power source: 9V Transformer</p>			

* All information of the above is for the reference only. No prior notice is made if any changes.



TECHNICAL DATA

Power supply:	• 9V battery • 9V transformer
Recommended water pressure	0.5-8.0 (7-116 PSI) With water pressure of more than 8 Bars, use a pressure reducing valve for reduction.
Sensor range:	Self adjusting sensor. Adjustable with remote control
Minimum Sensor Range:	50 mm
Maximum Sensor Range:	160 mm
Security time:	90 seconds. Adjustable with remote control.
Hot water temperature:	Max. 70 ^o C

SPARE PARTS LIST

10-Pack Sensor kit Touch Free B AB1953	08004502
10-Pack Sensor kit Touch Free E AB1953	08004510
10-Pack Solenoid valve kit	07232000
8-Pack Solenoid housing kit	07221119
Battery box	06530008
Transformer (EU plug)	06522091
Remote control (optional)	07100005
Soap & Water Remote Control (optional)	07100014



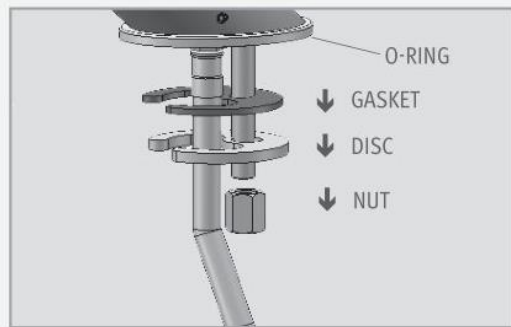
INSTALLATION

STEP 1 – PREPARATION FOR MOUNTING THE FAUCET

1 Shut off the water supply.

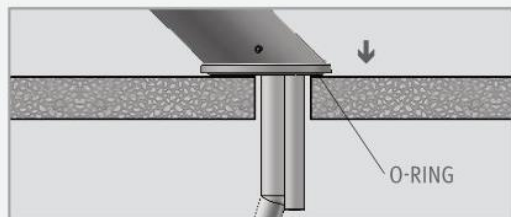


2 Remove the hexagonal nut, disk, and gasket. Do not remove the O-ring from the escutcheon.

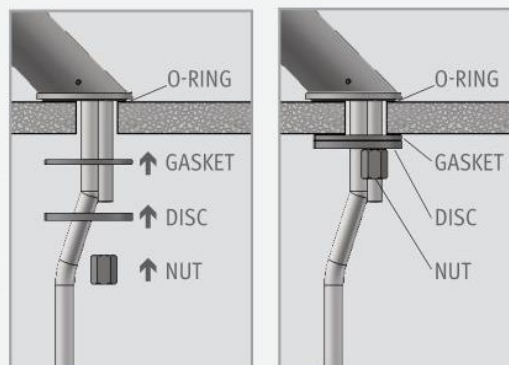


STEP 2 – INSTALLING THE FAUCET

1 Place the faucet base into the hole in the deck. Ensure that the O-ring is located between the bottom of the faucet and the top of the deck.



2 Slide the gasket and disk over the flexible hose and secure the faucet in place by firmly tightening the hexagonal nut onto the threaded rod.



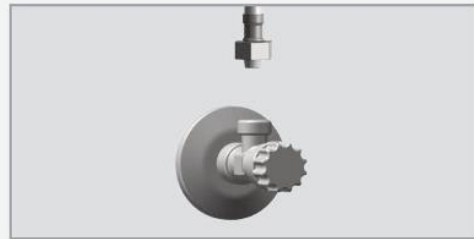


INSTALLATION

STEP 3 – CONNECTING THE WATER SUPPLY

1

Connect the flexible pipe to the water supply.



MAKE SURE THAT THE FILTER(S) IS/ARE INSTALLED BETWEEN THE FLEXIBLE PIPE(S) AND THE SHUT OFF VALVE(S) (ANGLE VALVE) (NOT SUPPLIED).

2

Turn on the central water supply and the shut-off valves (angle valves) and check for leaks.



3

Connect the power source.

4

Once the power source is connected, wait 15 seconds to allow the system to set the ideal sensor range. A LED light will flash continuously to indicate this adjustment period. The solenoid valve will open for 1 second to indicate that the ideal sensor range was set.



5

If the automatically adjusted sensor range is not satisfactory to your purposes, please refer to the section entitled “Settings adjustment”.



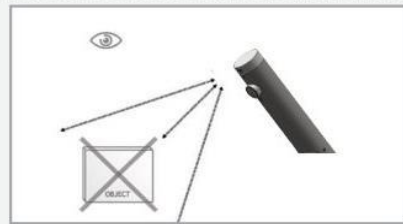
INSTALLATION

STEP 4 – CONNECTING THE POWER SOURCE

This product includes a self adjusting sensor. The ideal sensor range for the specific location will be set automatically.

1

Important: Check that no objects are in front of the sensor besides the washbasin.



2

Now, remove the protecting sticker that covers the sensor.



3

If your model is Touch Free B AB1953

Install the battery box on the wall underneath the sink using the two sided adhesive foam tape. The cable connection must point down. (You can use an optional extension cable in order to assemble the battery box up to 10ft. away from the sink.)

Touch Free B AB1953 E

Plug the transformer into the electricity socket and connect the connectors.

4

Wait about 5 seconds in order to allow the system to set the ideal sensor range. After the self adjustment has taken place the solenoid valve will open and close for 1 second and a small amount of water will be leave the spout. Then the product will be ready for use.



5

If the obtained range is unsatisfactory, refer to the section entitled “Settings adjustment”.



BATTERY REPLACEMENT

When the battery weakens, the LED indicator light will blink at a constant rate. The battery must be replaced within two weeks.

Battery models only:

- 1) Turn off the shut off valve.
- 2) Remove the faucet cover with the sensor, use the supplied Allen key.
- 3) Disconnect the connector coming from the electronic unit to the battery.
- 4) Replace the used battery with a new 9V battery. A Lithium battery is recommended.
- 5) Carefully place the battery inside the body and reassemble the electronic unit connector to the battery.

Important:

- Since water contacting the battery terminals rapidly drains the battery, do not allow moisture or water into the system while the battery is being replaced.
- Make sure the O-ring is still in its groove and is not damaged. If needed replace it with a new one or clean and lubricate it with silicon grease before reassembling the parts.

- 6) You must reassemble the faucet cover with the sensor within 30 seconds in order for the sensor self adjustment to be done properly.

Important: Spent batteries should not be disposed of with normal household waste. Contact your local authority for information on waste disposal and recycling.





TROUBLESHOOTING

PROBLEM	INDICATOR	CAUSE	SOLUTION
No water is coming out of the faucet:	1. LED light in the sensor does not flash once when user's hands are within the sensor's range.	1. Range is too short.	Increase the range
		2. Range is too long.	Decrease the range
		3. Unit is in "Security Mode"*	
		4. Sensor is picking up reflections from the washbasin or another object.	Eliminate the cause of reflection.
	2. LED light in the sensor flashes once when user's hands are within the sensor's range.	1. Debris or scale in solenoid.	Unscrew solenoid, pull out the plunger and the spring from the solenoid and clean them. Use scale remover material if needed. When replacing the plunger, please make sure that the spring is in vertical position.
		2. The central orifice in the diaphragm is plugged or the diaphragm is torn	Clean the orifice or replace the diaphragm.
		3. The water supply pressure is higher than 8 bar.	Reduce the supply water pressure.
		4. The water supply pressure is under 8 bars and yet the pressure in the faucet's body is higher. This situation could be caused by a sudden increase in the water supply pressure that the backcheck prevents from dropping, even after water supply pressure drops under 8 bars.	Shut off the water supply and unscrew one of the flexible pipes in order to reduce the pressure that blocks the product.
Water flow from spout does not stop:	1. Sensor flashes once when user's hands are within the sensor's range.	1. Debris or scale in diaphragm	Clean the orifice or replace the diaphragm.
		2. Connectors between the electronic unit and the Dual power input box are disconnected or not connected properly	Connect the connectors properly. <i>Refer to page 11.</i>
	2. LED light in the sensor does not flash once when user's hands are within the sensor's range.	1. Sensor is dirty or covered.	Clean or eliminate the cause of interference.
		2. Sensor is picking up reflections from the washbasin or another object.	Decrease the range or eliminate the cause of reflection.
Water flow diminished		Filter or aerator is clogged	Remove, clean, re-install the filter or aerator

* "Security Mode": If the sensor is covered for more than 90 sec. the faucet will automatically shut off water flow. To return to normal operation remove any blockage to re-establish operation.